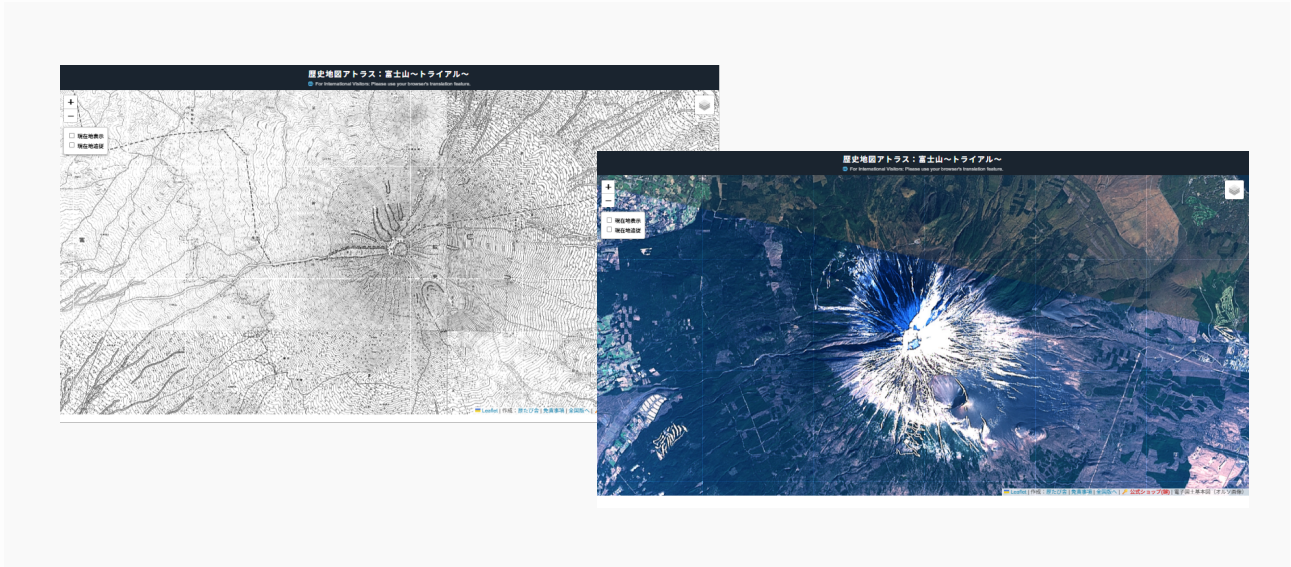


R e k i t a b i s h a

Mt. Fuji

Maps that Trace Time, Memories of Faith

Overlapping Eras: Old Maps & Present



What lies before you is more than just a map. It is a crossroad of space and time where "Old Maps," conveying records from the Meiji era, overlap with "Digital Topographic Maps (Orthophotos)" created with modern technology.

The passage of over 100 years is etched into these map lines. Slight collapses of crater edges due to harsh environments and the evolution of mountain trails—by layering these maps, the history that Mt. Fuji has silently carved becomes vivid and clear.

Hoei Crater: Memories of Transformation



Look closely at the "Hoei Crater" opening wide on the southeast slope. Formed in 1707 by the largest eruption of the Edo period, it drastically altered the appearance of Mt. Fuji.

Here lie the memories of "Fujiko" pilgrims who once climbed this treacherous path step by step as a testament to their faith. Both as a geological wonder and an object of worship, these diverse expressions are the true records that Mt. Fuji passes down to future generations.